

The Page-out

Glacier County EMS Newsletter



November 2007 *Published by Captain Kyle Starr*

The Pressures On

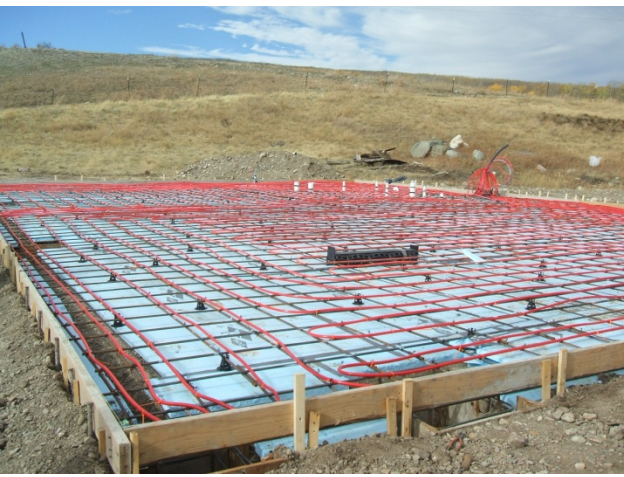
We recently purchased a Karcher pressure washer and placed it into service at station 1. It should make the task of washing our fleet a bit easier, as it does a better job of cleaning all the nooks and crannies. The soap function only works when the adjustable wand is on minimum pressure, so it can be used to presoak bugs and dirty spots. To use it, connect the water host to the inlet, turn the water faucet on, plug the washer in (making sure the GFI breaker on the plug is reset) and turn the switch to "on". The washer turns on automatically each time the trigger is squeezed. Please handle it gently. With everyone's help, we can ensure that it sees a long service life.

Station 2 Construction Update

The construction project for the new station 2 is going well. A few minor "hiccups" were experienced, but any major construction project is bound to have some. The foundation was poured on the 16th, and the frame of the building went up on the 22nd. The insulation that has been stored at station 1 in the west bay will be moved out and shipped to the construction site sometime on the week of the 22nd. Now that the frame has gone up, we anticipate that the rest of the exterior will be in place in good time. Additional photos of the construction can be found in the photo gallery on the department website.

Leave Request Form Now in Use

A new form has been placed into service for use by FT personnel. A leave request form must now be filled out if requesting time off for vacation or scheduled medical leave. The forms will be available at the report desk as well as on the department website in the staff-only section. We ask that requests be turned in at least 30 days prior to the day requested off whenever possible. Every effort will be made to grant time off requests, but requests can be denied if shift coverage cannot be arranged.



The foundation is prepped to be poured at station 2. The red lines are the water lines for the radiant heating system.



The foundation is poured on the site of the new station 2. We have been fortunate to have had nice weather for this time of year.

Chief Attends Training

On October 28th, Chief Laidlaw flew to Aniston Alabama to undergo the Healthcare Leadership Course at the Noble Training Center. The course is sponsored by FEMA and the Dept. of Homeland Security and is a 4-day exercise focusing on all aspects of managing a WMD incident. Chief Laidlaw was accompanied to Alabama by employees from NRMCM, the Glacier County health nurse and Glacier County DES Officer Jim King.

Quote of the month:

"If you arrive at the scene 30 seconds too late, nobody will notice. If you arrive 30 seconds early and kill someone in the process, nobody will ever forget"

Safety Quote: "A safer you is a safer me"

The Facts on MRSA

Those that watch the news or read the newspaper will have seen several stories in the national news lately regarding MRSA infections. Here is some information to help you learn more about MRSA and what precautions we can take to minimize risk to us and our patients.

What is it? MRSA stands for Methicillin-resistant Staphylococcus Aureus. It is a bacteria that is resistant to certain antibiotics, especially common ones like penicillin, amoxicillin and methicillin. It is estimated that 1% of the US population are carriers of MRSA.

How is it spread? MRSA can be spread by close skin-to-skin contact (especially if open wounds are present), skin contact with contaminated surfaces or items and poor hygiene.

What are the symptoms? MRSA infections often present as an irritated red spot on the skin that can resemble pimples or boils. They may also be painful, swollen, and contain pus. The affected area may grow in size over time.

How can it be avoided? Wash hands often, use hand sanitizer when water is unavailable., keep cuts covered and clean until healed, avoid sharing personal items such as towels and razors, decon ALL items that come into skin contact with patients.

MRSA infections are treatable by your healthcare provider. By practicing good standard precautions, carefully cleaning our patient compartments and being mindful of infection control, we can minimize the risk to ourselves and our patients.

Region 2A Conference

The 2007 fall Region 2A conference is coming to Shelby November 3rd and 4th. Some of the classes provided include:

- Preserving a Crime Scene on EMS Calls.
- Incident Command
- Current Trends in EMS
- Managing a Mentally Unstable Patient
- And more!

15 CE credits are available. The cost for the full conference is \$40 for region members. GCEMS is a member. The cost for Saturday only is \$30 and \$10 for Sunday only. A flyer is on the bulletin board for those interested.



Department Tidbits

- The power cord for the LP12 in A3 has been located and is back in service.
- A new LA Rescue oxygen cylinder bag has been purchased and placed in service in SO 1. The bag also contains 2 adult NRM, 1 ped NRM, 1 ped NC, 2 adult NC and 2 nebs.
- We will be finding out on November 15th whether or not we will be awarded the \$5,000 grant that was applied for to be used for ice and water rescue equipment.
- Nancy and Raylee have received their National Registry cards and will get their state certifications shortly.

Wiped Out

The traditional disinfectant spray and paper towels in the rigs have been replaced with CaviWipes. The pre-moistened wipes have the same microbe-killing capability as the spray, but with some added convenience. It has been proven that people are more likely to perform decon/cleaning with wipes than with traditional spray and towels. Please remember to close the lid when done to prevent them from drying out. We will try the wipes and see how well they work out. Your feedback on them is appreciated.

Fleet Update

A2 recently left a crew stranded while returning from Great Falls. It was found to have been inadvertently filled with gasoline instead of diesel. The problem has been fixed and it is now back in service.

A1 went to Northern Ford last week after a crew lost all instrumentation while returning from Browning emergent. Fortunately, it was discovered that the problem was simply a connection that had come undone and was easily repaired.

A2 went in on 10/9 for new tires and all new brakes.

The vehicle maintenance software is proving to be a useful tool in tracking fleet maintenance. It also allows us to track how much has been expended on repairs on each vehicle in our fleet.